

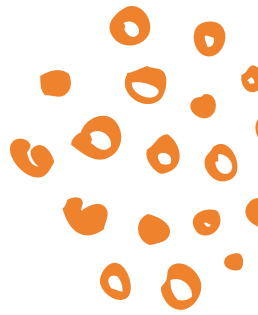
MERRY CHRISTMAS

Homes of Hope Newsletter

THE SUMMER EDITION 2021




Building our children together
Manaakitia a taatou kura pounamu

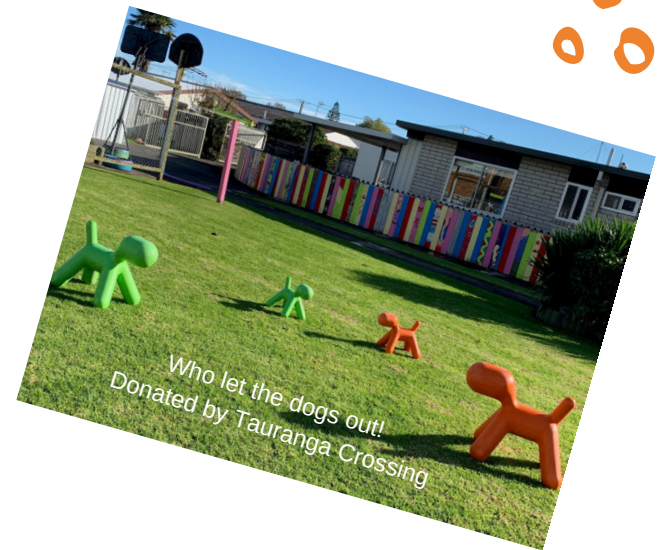


Rata Home our grand old lady

HERE'S WHAT'S IN OUR NEWSLETTER

your newsletter just keeps getting better!

- TECT our eternal angel
- A message from Hilary, CEO and Co-founder
- Tamariki stepping up and into the world
- Leaving a gift in your will
- Dave the 4 Square man at The Lakes, what a champion!
- Level 3 lock-down, it was a breeze! 
- Wright Family Foundation supporting the build of Kauri
- CCPT rooms - we can begin to heal within the greater community
- Young Kauri Seedlings are growing as are our young tamariki
- Endowment funding - the story of Edna
- Aotearoa Gaming Trust sends their love to tamariki in care
- Grassroots, with thanks
- Taking the tribe on a kiwi camping holiday
- Watch this space Debbie and Paul from Growers Direct are on a mission
- Santa comes early with - Shoe Box
- Sharp Tudhope Lawyers, caring for the community
- NZ Community Trust -refreshing our world
- Lion Foundation breezes in with air conditioning for Rata, the grand old lady
- Check out Madeline's work and support Homes of Hope
- Psst....something wonderful has happened.....



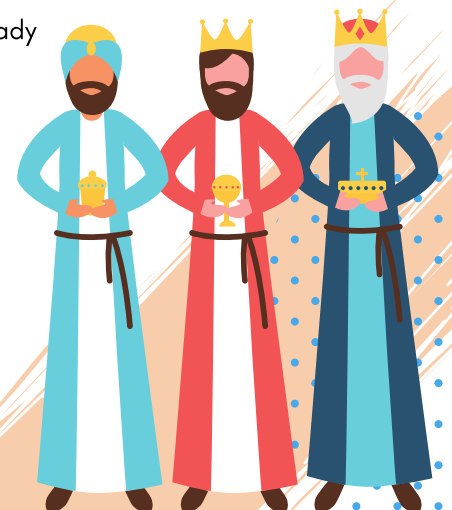
Who let the dogs out!
Donated by Tauranga Crossing



Hope and her daughter Lilly, just a part of family life at Homes of Hope



Labour MP - Hon Jan Tinetti visited our new home and CCPT renovations. Jan is a wonderful friend



Homes of Hope Newsletter

KO TE AHUREI O TE TAMAITI ARAHIA Ō TĀTOA MĀHI
LET THE UNIQUENESS OF THE CHILD GUIDE OUR WORK




TECT -OUR ETERNAL ANGEL

having donated \$1.5 million since 2004

As a community, we are extremely fortunate to have TECT in our lives. Since 2004 TECT has continually supported our organisation through the good times and the tough times. Wayne Werder, General Manager, and Paula Hudson, Operations and Grants Manager stay in touch and occasionally pop in for afternoon tea which is always a pleasure.

Their board of trustees has been extremely supportive and we could not ask for better long-term friends. Or in their case, an eternal angel.

Each financial year, we start our new journey with a mountain to climb. We must raise an enormous amount of funds to be able to serve our children in a manner that we believe is most beneficial to their health and wellbeing. Believe me, this is no easy task.

Each year when we start this funding journey, TECT is always the first organisation for funding that we reach out to. Every year they have journeyed with us and never let us down. This means the world to our organisation. Simply, they are our constant partner and friend in a turbulent world, there is nothing more supportive, and we can breathe  thanks TECT!

Check out the Sunlive article below. Hilary is dwarfed by some of the 'strong men' from Classic Builders. I think she quite likes it this way.



A MESSAGE FROM HILARY, CEO AND CO-FOUNDER

Merry Christmas

Every now and again I ask myself whether or not we are making a difference.

How do we measure 'making a difference'? How do we 'build' tamariki/children together? There are many ways and often it will be coloured by the lens of the viewer. It is complex and often complicated, and we keep learning. We also keep aspiring to do better for them and their whanau/families.

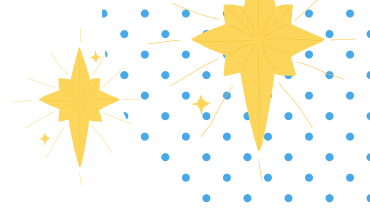
Despite the wrestling and the challenges, I come to the place of peace, believing that for this moment in time, for this hug, this smile, this word of affirmation or encouragement, this support, that we are making a difference in the lives of little people with big hearts and huge potential. We are reflecting to them ways of 'being and doing' that will find their way into their 'being and doing' and then sometimes, in some ways, on some days, both now and into the future, all those seeds sown and pearls of precious memories will return to remind them, guide them, encourage them. When and if we see gains in their developmental milestones, their behaviours or achievements, we can and will rejoice.

In the meantime we can keep reflecting love, unconditional acceptance, and positive regard, and the knowledge that we are here, now, we care and they matter. They will always matter. We love because He first loved us.

A very blessed Christmas everyone.

Hilary

[CLICK HERE TO READ MORE ABOUT TECT & HOMES OF HOPE](#)



Homes of Hope Newsletter

THE SUMMER EDITION

TAMARIKI STEPPING UP AND INTO THE WORLD

loving taking part and learning

As a part of everyday life at Homes of Hope our tamariki have their daily chores, as they get a little older, it is good for them to experience and feel proud of their extra responsibilities.

Two of our older tamariki have goals they are working towards in terms of saving money to purchase items.

To support them with this, we have created a job for each for them around Homes of Hope. We developed contracts with each of the tamariki, as you would in any job. Each tamaiti also receives a pay slip with their pay.

They are proud of their jobs, and this is a fantastic way to boost their mana and support them in achieving the goals they have set for themselves, while also teaching valuable life skills.

We are so proud that they are taking these opportunities and growing through them.



LEAVING A GIFT IN YOUR WILL

you will make an ongoing difference forever in the lives of children in need

Of course, we all want to first make sure our family's futures are secure, that's a given! Many of us cannot afford to give regularly when we are alive even though we would like to. An option might be to leave a little in your Will - it is not difficult to set up, and you can designate any amount or a percentage of your estate, and it can provide a lasting gift for a cause you are passionate about.

At Homes of Hope, we have set up an endowment fund with Acorn Foundation and invite you to actively think about leaving a gift in your Will to support this fund. Your gift will help to grow this fund and once it reaches the minimum threshold, the interest from the fund will provide us with an annual income stream year after year.

If you appreciate the work we do and would like to leave a lasting legacy that continues beyond your lifetime, consider gifting as little as 1% of your estate in your Will - it could be one of the most satisfying decisions you ever make. You can read about Edna, Acorn Foundations' first-ever donor further on in this newsletter.

To find out more, please click the link below or email info@homesofhope.org.nz, or alternatively, contact Margot at Acorn Foundation on (07) 579 9839.

[CLICK HERE TO FIND OUT MORE](#)

Homes of Hope Newsletter

THE SUMMER EDITION



DAVE - THE 4 SQUARE MAN AT THE LAKES

what a champion!

Dave has been what you would call... 'a great bloke' over the past six months or so. He was 'upfront and center' when we had Covid Bear Badges in stores and has since made us his charity of choice.

Over Covid lockdown, at the end of level 3, Dave called us to say that his freezer was on the blink, and would we like some frozen food for the children's homes. Well, of course, the answer was YES PLEASE! Upon getting there, Dave had also saved other items for our homes as well.

Since then, Dave has celebrated a year of being in his beautiful store and held a day to celebrate with community. He kept our children front and centre by holding a BBQ with all proceeds coming to Homes of Hope.

What a wonderfully thoughtful human, thank you Dave!

If you ever get down to The Lakes, check out his store, we think it is one of the best layouts and food choice we have seen at a 4 Square store, and the team are super friendly!

LEVEL 3 LOCKDOWN

it was a breeze....



How was your lock-down? Did you manage to make the most of the days?

Our house parents had an awesome time with our young tamariki. The children did loads of arts and crafts and played lots of board games. They also spent a great deal of time out in the yard playing touch rugby, hand ball, soccer, basketball, you name it they played it and of course they enjoyed one big bubble with the community homes all together. They also got to enjoy two of our tamariki celebrating their birthdays.

At the end of lock-down, one little guy was missing his friends at school, so he was happy to go back, but the rest of the children would have happily stayed at home for a lot, lot longer.

We are so fortunate to have the calibre of house parents within our team. Our house parents tend to stay with us for the long haul, for example, **Aunty Perry**, has been with us for almost 18 years! She is someone with a beautiful soul and we cherish her time with us.



**Help Make Christmas 2021
Great for Tamariki in Care!**

Homes of Hope Newsletter

THE SUMMER EDITION



**Wright Family
FOUNDATION**

SUPPORTING THE BUILD OF OUR NEW KAURI HOME

it takes a village.....

As you may have read in previous newsletters, our new home Kauri has been built with an enormous effort, undertaken by community who wanted to help, this included the **Wright Family Foundation**, Chloe and Wayne Wright attended the black tie event hosted by Kirsty and Blair of **Cashmore Real Estate** to raise funds for the new home. On the night they donated a significant amount that made the journey that little bit easier.

Our thanks and gratitude goes out to you both.

We have been so fortunate to build and pay for the entire home through the generosity of so many. Our hearts will always hold a special place for the team at **Classic Builders, their trademen and contractors** who made this home possible, along with the **Sutherland Self Help Trust, Chaplain Gordon Parker** and so many others.

He waka eke noa -We are all in this together



HUGH GREEN FOUNDATION

CHILD CENTRED PLAY THERAPY (CCPT) ROOMS COMPLETED

we can begin to heal within the greater community

With Covid lockdown, wet weather, and sickness all taking their toll over the past winter, it has been a long journey to get to the finish line, but we **never give up**. When children's well-being is at the heart of the journey, we are unstoppable!

The renovation is complete, the blessing has taken place and the rooms are now OPEN.

We have a growing number of trained and intern CCPT therapists to manage the therapeutic care of children being recommended by schools, specialists, and word of mouth. There is so little therapeutic care for children from 4-11 years of age and as Hazel Hape, manager of Tauranga Women's Refuge stated: "*Children have a right to be loved, nurtured and supported, unfortunately, family violence can have devastating and life-long physical, emotional and psychological impacts and we continue to be worried about the lack of specialist family violence and child-centered responses to help children recover from their trauma*".

This is where our services to the greater community is stepping up to meet this challenge. **So much aroha, thanks, and gratitude go to our wonderful partner, the Hugh Green Foundation** for making this possible.

Homes of Hope Newsletter

HE ORA TEWHAKAPIRI, HE MATA TEWHAKARIRI
THERE IS STRENGTH IN UNITY, DEFEAT IN ANGER

YOUNG KAURI SEEDLINGS

are growing and need food for the soul just like young tamariki

Mike from Forever Green Seedlings was so kind in gifting Kauri seedlings to us for our big celebration in July this year. If you were fortunate to get one of these here is what Mike suggested needs to happen to these seedlings now as we head towards the 4th-month of caring for them.

Mike suggested, you should plant the round biodegradable tube that holds the seedling into a bigger 1-litre pot, see the image below with the red arrow (minus the brown paper with the HofH logo on it),

Using Daltons Potting Mix will supply all the nutrition the young seedling needs.

Keep watering the seedling so the soil remains moist and pop it outside in a protected area not too hot.

Just like our young seedlings at our Kauri, Rata, and Matai homes, they need constant care, nurturing, and nutrition to ensure they reach their full potential to grow into strong, beautiful humans.



ENDOWMENT FUND - THE STORY OF EDNA

her gift goes on forever.....



We all have something we are passionate about. At Homes of Hope our team have the passion DNA for children in need. For Edna Brown her passion was for medical research and/or treatment. In 2003 Edna became the first Acorn foundation donor and seeded the first personal endowment fund which (as seen below) is paying dividends and is keeping Edna's passion alive long after she has passed. What a wonderful woman!

2003 - The Edna Brown Endowment Fund established

Original gift
\$67,200

First established with a Fund balance of \$67,200

2021 - after 18 years

Collective total
\$165,835

\$97,913 Fund balance + \$67,922 grants distributed

2033* - after 30 years

Collective total
\$231,486

\$118,211 Fund balance + \$113,275 grants distributed

*Estimate growth rate of 6.5% for future years and annual distribution of 4%.

CLICK HERE TO READ MORE ABOUT EDNA BROWN AND HER GIFT THAT KEEPS ON GIVING

Homes of Hope Newsletter

THE SUMMER EDITION



AOTEAROA
GAMING
TRUST



funding to assist house parent roles

Such exciting times happen at Homes of Hope, yes, we have our challenges, but we see beautiful changes happening around us that balance the journey we are on with tamariki.

Sometimes the operational needs of our homes are often challenging, and there are only so many organisations that have the resources to help out. We sincerely thank Aotearoa Gaming Trust for coming to the party to assist us with such an important piece of the puzzle. Without house parents to care for tamariki and provide the ongoing support these children must have to heal and grow into beautiful people, the challenge would almost be too great.

Me hikoi kotahi tatou, Walking together, working together



new vehicle for social workers

As you can imagine, we are all over the city supporting the many needs of children, and as I speak our social worker is heading out the door to take one tamaiti to the doctor.

We were in need of a car for both our social workers to perform their roles and **Ebbett Tauranga** came to the party to give us an extremely good price for a Hyundai i20 that met our needs perfectly!

Of course, we still must pay for the car and **Grassroots Trust** came through for us with a large contribution to make the journey a lot easier on our bank balance. It is awesome how our communities work together to provide. We are truly, truly blessed! THANK YOU ALL!

TAKING THE TRIBE ON A KIWI CAMPING HOLIDAY FOR CHRISTMAS

can you help?

We all remember those camping days and if you are like us, they were some of the most fun times on the calendar where you got to live in the great outdoors, swim, BBQ, laze about, play, ride the waves and take a break from the normal routines of everyday life.

Well, this is just what we are planning for our young tamariki this Christmas holidays, and the great thing is we can come back to reality and pop up the tents in the back yard to reinvent it all over again!

Thanks to Trust Power who have taken the lead and placed some funds into the kete to start the ball rolling.

If you would like to help us to make this a truly blessed Christmas along with a well-deserved break and special time for tamariki in care, please click below.

**Help Make Christmas 2021
Great for Tamariki in Care!**



Homes of Hope Newsletter

THE SUMMER EDITION

WATCH THIS SPACE

Debbie and Paul from Growers Direct at Te Puna are on a mission

Look out gardens, you are about to have a major do-over.

Firstly, we will complete the safety of the playground area with an environmentally friendly locally made wood chip.

We are fortunate to have the **Kiwanis Foundation** provide the funding for the woodchip.

Then the big guns are coming in to spruce up some of our home's gardens and make them look spiffing!

Such an enthusiastic pair, Debbie and Paul came to visit our homes and Paul was brimming with wonderful ideas on how to make our spaces so much more user-friendly and visually appealing, he is a master of design!

Debbie was in her element directing Paul on where to stand for images (he is a little camera shy) and they are now on a mission to make this happen. Watch this space for a follow-up of after photos to go with the before images below.



SANTA COMES EARLY WITH - SHOE BOX

thank you Claire for all your special care

Every year at Christmas time Claire (pictured on the left) arrives laden with gifts for the children. All of them specially wrapped and with so much attention to detail. This has really been a blessing and given us a bit of a jolt, Christmas is just around the corner!

SHARP TUDHOPE LAWYERS CARING FOR COMMUNITY IN SO MANY WAYS

celebrating 125 years at the heart of the community - yet giving to tamariki

Can you believe it? On their birthday of 125 years, their team made children in need the focus through the gifting of funds to assist our homes. How awesome can a team of people be! Your generosity is overwhelming. It is through community like you that we are able to provide for children.

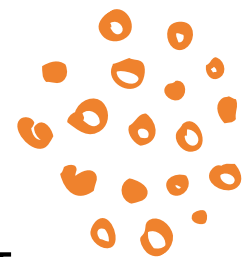
He aha te mea nui o te ao? He tangata! He tangata! He tangata! What is the most important thing in the world? It is people! It is people! It is people!

Sharp Tudhope certainly know this.



Homes of Hope Newsletter

HE ORA TEWHAKAPIRI, HE MATA TEWHAKARIRI
THERE IS STRENGTH IN UNITY, DEFEAT IN ANGER



NZ COMMUNITY TRUST REFRESHING OUR WORLD

with a lick of paint

Changing the world is what the community of Tauranga do so well. NZCT has been an avid supporter of our children for a very long time and never ceases to amaze with their generosity.

Not long ago they put their hands up to repair the roof of one of our homes. Now their hand is held high once again to paint the inside of Rata home, our grand old lady who desperately needs some love and care on the inside.

We thank you NZCT from the bottom of our hearts!

LION FOUNDATION WHAT A BREEZE

and then the heat goes on

Blessed is a word often used in our organisation and for good reason, when we are in need of help, you, our community come together to provide in a manner that leaves us feeling truly humbled.

The Lion Foundation is a part of this beautiful community that we rely on for support and they have once again come to the party with funds to provide a heat pump/airconditioning for our largest children's home. This means a lot to these precious children to support their wellbeing and care. Thank you Lion Foundation!



CHECK OUT MADELINES WORK

pointmadestudios are giving 50% of Christmas orders to Homes of Hope

Amazing! Have you seen Madeline's custom illustrations? Check it out below. I have ordered a master piece of my dog but it's a secret shhhhh..... For all Christmas orders, Maldeline is kindly giving 50% of proceeds towards helping our children. So much aroha!



Psst..... something wonderful has happened and we wanted to let you know the delicious news, two of our team are finalists in the TECT Community Awards: Our CEO and Co-founder Hilary Price is a Heart of the Community Award finalist and David Walker a finalist in the Volunteer of the Year Award. Fingers crossed!

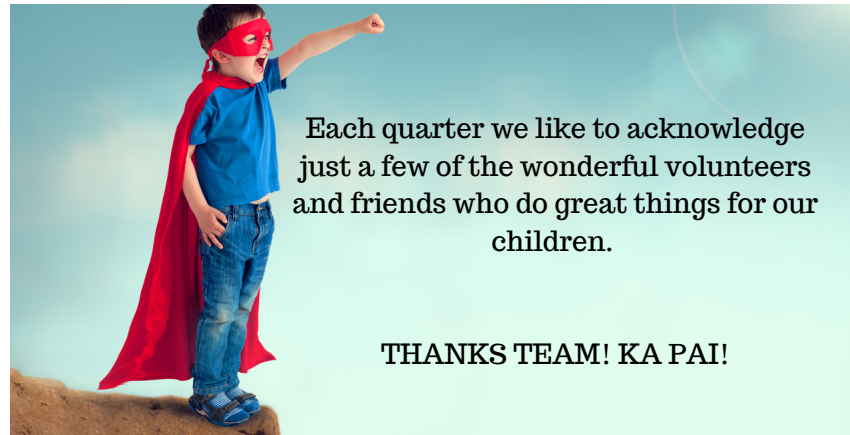


[CLICK HERE TO SEE MADELINE'S WORK](#)



Homes of Hope Newsletter

SUPER HERO'S, SHOUT-OUT, YOU MAKE OUR
COMMUNITY ONE OF A KIND!



Each quarter we like to acknowledge
just a few of the wonderful volunteers
and friends who do great things for our
children.

THANKS TEAM! KA PAI!

DR. JOAN CHAPPELL-MATHIAS

Dr. Joan Chappell-Mathias left a gift
in her will to be distributed through
the Acorn Foundation in support of
charities of which we have been the
recipients of some of these funds
distributed. We are most grateful to
Joan for this wonderful gift.
Thank you Joan!

KELLY O'HARA

Kelly is a dear friend of ours, she is
always looking for ways to support
us in our work. Recently she
dropped by with a bunch of new
clothes for our children and some
amazing portable nappy changing
bags. Thanks Kelly, we always
love to see you!

ANN & HANNAH

What a lovely surprise, when Ann
walked in with the most beautifully kept
dress-up clothes, toys and games and
in the most beautiful of condition.
Hannah had grown out of them and
Ann and Hannah thought of Homes of
Hope to give these beautiful items to.
We cannot thank them enough!

COOKIE TIME CHRISTMAS COOKIES

Mischa Ruegg has been busy getting
prepared for Christmas this year,
customers can purchase a bucket of
cookies from her for our tamariki. If you
would like to purchase some please
contact her on
mischa.ruegg@christmascookies.co.nz
Thank you Mischa!

KNIT & NATTER GROUPS

All our wonderful friends at the Knit
and Natter Group are a tremendous
support. Their dedication to knitting
a range of goods for our children is
beyond OUTSTANDING!
Thank you all.

SAHRA

Sahra has been doing her
placement here with us at Homes of
Hope as part of her Masters degree.
Good luck and thank you for
choosing this pathway to make a
positive impact on the lives of our
precious Tamariki

ONE FOUNDATION

Our grand old lady Rata Home has
served us well and we have been
giving her some loving tender care of
late with the help of so many within our
community of friends. One Foundation
is one of those who has given us funds
to replace a well worn out electric
switch board. We are so grateful!

Our Supporters

YOU MEAN THE WORLD TO US!
HE WAKA EKE NOA!



**The Sutherland
Self Help Trust**
Giving since 1962



Lottery Grants Board
Te Puna Tahua
LOTTO FUNDS FOR YOUR COMMUNITY



TECT