

Homes of Hope Newsletter

MID-YEAR EDITION 2025



Homes of Hope

Building our children together
Manaakitia a taatou Kura pounamu

Greetings all! We've had an incredible year filled with laughter, learning, and unforgettable moments. Here's a look at what we've been up to.....



What's inside..

- ◆ *Our People*
- ◆ *Our Mahi*
- ◆ *Appreciation*

You can reach us at
075789826 or office@homesofhope.org.nz

Our People



We would like to take a moment to honor Jon Price who, after 20 years, retired from the board of Homes of Hope at the beginning of this year. Jon has been both an instrumental and key person in not only the formation and growth of Homes of Hope, but also in supporting all those who have worked here in the last 23 years. From the very beginning back in 2002, Jon understood the vision and mission of Homes of Hope and God's calling in this ministry. Jon was invited to join the board in 2004 and served faithfully in this capacity until January 2025. Over the years Jon has served Homes of Hope in a variety of capacities such as a house parent caregiver, respite caregiver, maintenance worker, repair man, builder of equipment for promotions, volunteering on information stands, serving at events, planting the vision and practical solution for our whare Kauri and

being a master encourager. Any one who has the pleasure of knowing Jon will know he has a cheeky sense of humour, an impressive intellect and is someone who brightens your day and makes this world a better place. Thank you Jon for your commitment, unwavering support and belief, kindness, humour and all the wonderful things you have brought over the years by just being the incredible man you are. We wish you a relaxed and enjoyable retirement and know that whatever you do in this next season, you will do it in true "Jon" style.

In January, we welcomed Carena Grant into the role of Director of Services, following the disestablishment of her previous position as Practice Manager. Carena brings nearly two decades of social work experience, including four years with Homes of Hope, and has already made a significant impact through her leadership and commitment.

This strategic appointment has enabled us to strengthen and expand our service delivery while clearly defining operational and organisational responsibilities. Carena now oversees all operational aspects of our services, allowing the CEO to focus on broader organisational strategy and governance.



Our People



Kia ora koutou!

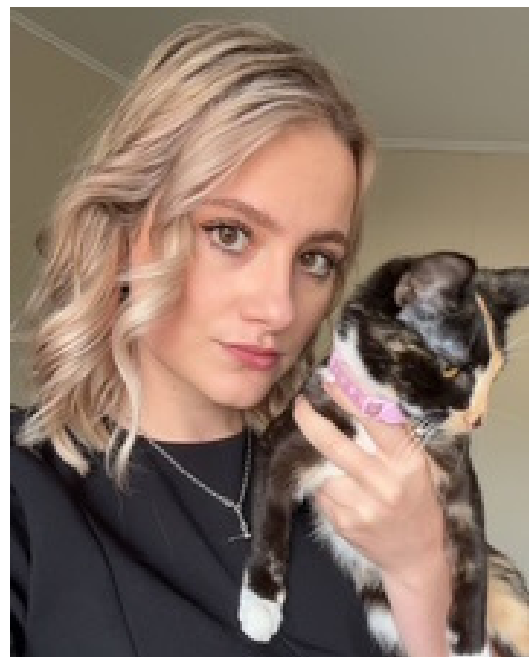
My name is Tracey Blackwell. I'm a mother of three adult children and a grandmother to 5 moko. I have joined the team as the social worker. I grew up in a little place call Whakatīwai on the firth of Thames. I've been a practicing social worker for around 20 years - I'm pleased to be joining the team at Homes of Hope as Social Worker. What first drew me to this role was the heart behind the mahi – providing children with a sense of safety, stability, and aroha while helping them heal from past experiences of trauma.

My passion lies in walking alongside tamariki and whānau in ways that uphold their mana, building trusting relationships, and create opportunities for growth and connection. I'm particularly interested in trauma-informed and strengths-based practice that recognises the importance of belonging, culture, and

whānau connections in every child's journey. I feel privileged to be part of a team that shares these values and is committed to making a real difference in the lives of our tamariki. Ngā mihi nui for the welcome. I'm looking forward to working together for the wellbeing of our tamariki and their whānau -Ngā mihi, Tracey Blackwell

My name is Kate Hamley, and I have recently joined Homes of Hope as the Office Administrator. I recently relocated to the Bay of Plenty after completing my Bachelor of Nursing. I bring with me a strong background in customer service, having worked as an Optical Assistant for over five years. During this time, I developed valuable skills in communication, organisation, and client support.

After three years of balancing a demanding workload between study and employment, I was ready to pursue a new opportunity that aligned with my values and desire to make a positive impact. I was drawn to Homes of Hope because of its dedication to providing safe, nurturing environments. I am excited to support the organisation's vision of creating brighter futures for those within our community.



Our Mahi



Financial year 25 has been a rewarding year for Homes of Hope with lots of wonderful things to celebrate. Thanks to the wrap-around support we can provide as part of our service, 14 tamariki were returned to whānau during that period. They are thriving and several of their cases have now been closed by Oranga Tamariki. This is the heart of why we do what we do and seeing so many tamariki not only return to whānau, but continue to thrive, is a highlight for our caregivers and team, and speaks volumes to the calibre of care and therapeutic support that is provided at Homes of Hope.



Our Child Centred Play Therapy (CCPT) service has continued to grow in the last financial year. With the addition of ROCC funding, we have been able to extend our reach to those in the community that may not have been able to access support without this. As a result, we are receiving more referrals directly from schools, Plunket, RTLB's and others in the community such as child Lawyers. Our passion is to provide early intervention where possible, to try and prevent tamariki ending up known to Oranga Tamariki or needing to be taken into



care. Being able to provide this support to clients other than those referred to us by Oranga Tamariki, has meant we are able to make a difference before things get to crisis point. We are excited to see our service continue to grow in this area.

Combined with CCPT, we have also been busy in the whānau support, mentoring and supervised access area. Often when a tamaiti (child) is in the play therapy room, one of our Social Work team is in the reception area providing individualised support to the whānau. As with the care space, this wrap-around support ensures that there is meaningful change within the whānau, that is sustainable and seeks to break cycles, which are often intergenerational.

We look forward to all the wonderful life-changing moments that are yet to occur and can't wait to update you on them all in due course.

Our Mahi

Support provided by Homes of Hope in 2025:



Number of children we provided full time care to:
22



Number of children we returned to their whānau :
14



Number of children we provided Child Centred Play to:
42



Number of support sessions provided to families:
389



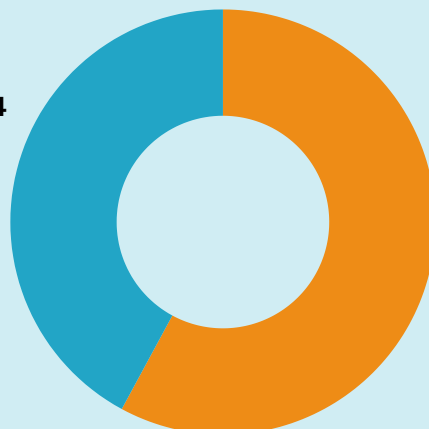
Number of supervised support sessions provided to families:
22



Number of ROCC Clients:
22

The chart below shows the support we have provided in 2024 and 2025. We are thrilled to see an amazing result this year where we have been able to reach so many more whānau and tamariki in supporting them to live a more fulfilled life.

Support provided in 2024
42.1%



Support Provided in 2025
57.9%

Our Community

The past 12 months have been filled with blessings from our community of supporters who have enabled us to repair and maintain our environment and equipment, as well as assistance with ongoing costs.

We have undertaken projects such as upgrading our fencing and outdoor playing spaces for the tamariki to play safer, and replacing the original old dysfunctional 1970s kitchen in one of our whare. Some of our supporters also contributed to making sure the tamaiti had amazing Christmas and Summer school holidays.

Homes of Hope couldn't continue the important mahi we do for the tamariki without your incredible support, and we are so appreciative of your generosity.



TECT

**BAY
TRUST**



Tauranga City



Legacy

FUNERALS



**ACORN
FOUNDATION**
WESTERN BAY OF PLENTY

Mercury 

Mackay 
Strathnaver
TRUST

thank you



Book a stay with
ezibed.com
with over 500 differing
accommodation options to
choose from!

For every night you
book, we make a
contribution to



Simply register.
Select HOMES OF HOPE. *Ezi as*
Then book.



Others:

The Rehabilitation Welfare Trust,
T.M Hosking Charitable Trust,
Lois Dalley Charitable Trust (Chenery Memorial Trust),
Kathleen Dorothy Kirkby Charitable Trust,
Kim Bevins Charity Cricket Match

[Want to help?](#)
[CLICK HERE TO DONATE](#)